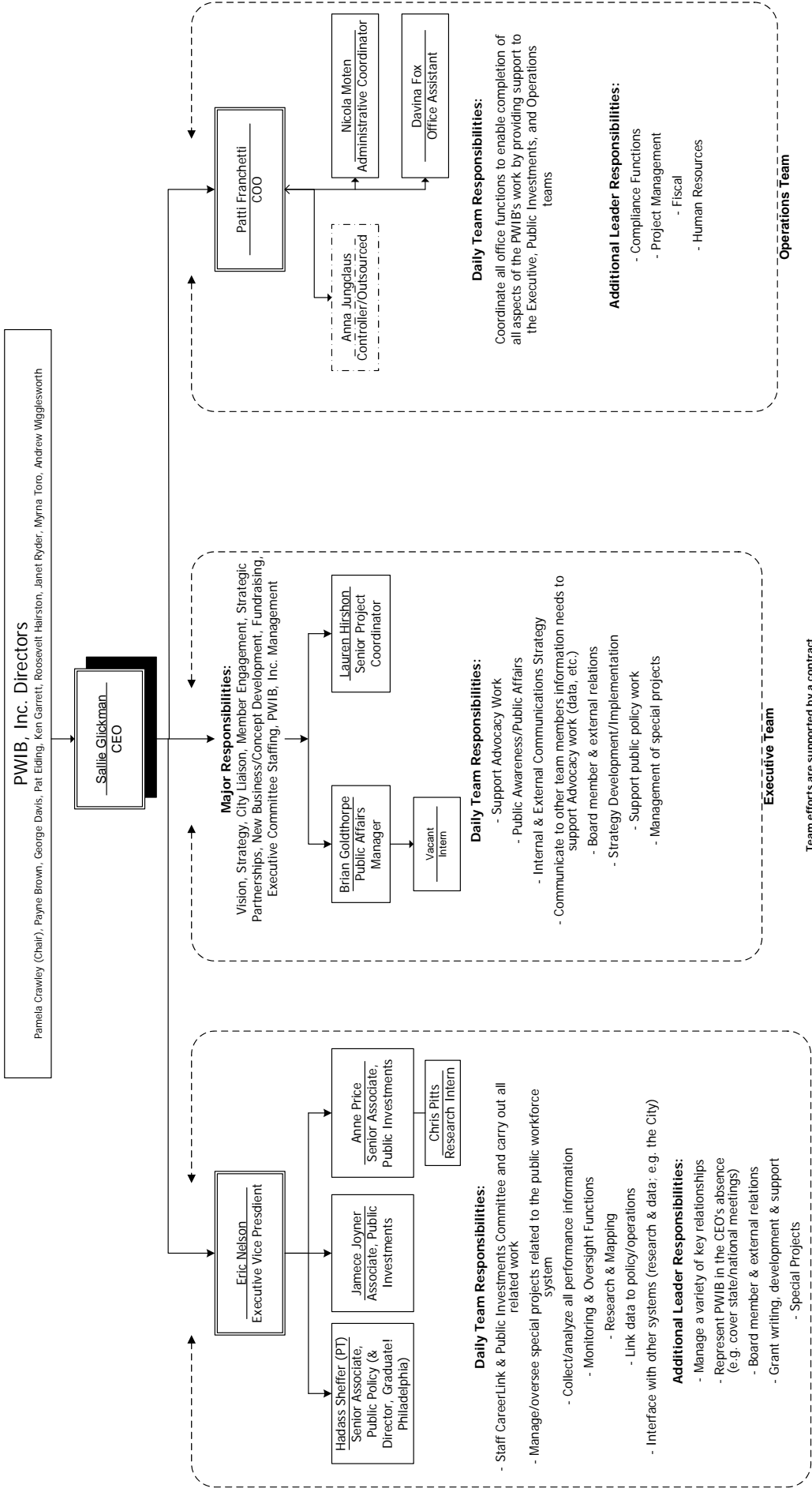


Resource Development & Alignment	Approach	Current PWIB Activities	New Work	Primary Board Oversight (Functions)
	<p>The PWIB believes leveraging of resources and diversification of funding support is critical to an effective workforce system. (After all, the issues exist whether or not a funding stream is available to address them.) Therefore, the PWIB works to secure additional funds and to maximize current resources by increasing efficiency, minimizing duplicative efforts, eliminating investments in projects without demonstrated effectiveness, and targeting new investments to high-impact projects.</p>	<ul style="list-style-type: none"> ▪ Aligns resources (funding maps, new partners development, advocacy) ▪ Develops resources (fundraising from private and public sources; regional non-compete protocol; member contributions; sponsorships; etc.) ▪ Maximizes resources (efficiency; e.g. system structure/analyzes impact of investments; regional collaboration) ▪ Reduces duplication (e.g. youth program alignment – single point of entry for employers and youth registration; coordination of CareerLink) ▪ Develops and implements sustainability plans for all projects ▪ (LSCA: Corporate investments/regional leveraging of resources) 	<ul style="list-style-type: none"> ▪ Establish one external fundraising arm for all key workforce projects* <p><i>* This may not be accomplished during the time period of this work plan</i></p>	<p>Public Investments (responsible for public alignment function) Executive (oversees fundraising/new resource development) Youth Council (alignment of youth funding streams and programs) Signature Initiative Advisory Boards (fundraising for specific projects)</p>
Regional Alignment	<p>The PWIB recognizes that city borders are meaningless to employers when it comes to finding workers. Therefore to the greatest extent possible workforce services should be coordinated across the region. In 2002, the PWIB joined with the workforce investment boards in Bucks, Chester, Delaware, and Montgomery Counties to organize the Southeastern Pennsylvania Regional WIB Collaborative. The focus of this group is to advance the alignment of workforce industry needs across county borders.</p>	<ul style="list-style-type: none"> ▪ Participates on the Collaborative ▪ Provides region-wide data support ▪ Provides some staff support (e.g. the PWIB staffed the 2004 Collaborative strategic planning effort; grant writing) ▪ Projects: LSCA, Financial Services, Retail Skills (Center at King of Prussia Mall – co-investor with Montgomery & Chester Counties) Regional industrial distribution & logistics advisory committee 	<ul style="list-style-type: none"> ▪ Work with the Collaborative to identify new opportunities for partnering 	<p>Regional Collaborative (leadership body for region-wide initiatives) Executive Committee (PWIB oversight) Financial Services Institute Advisory Board (cross-county project – with the Montgomery County WIB) Life Science Career Alliance Board of Directors (signature Collaborative initiative)</p>

Appendices:

PWIB Organization Charts (Staff & Board Committees)

PWIB Inc. Organizational Chart



PWIB Committee Structure

